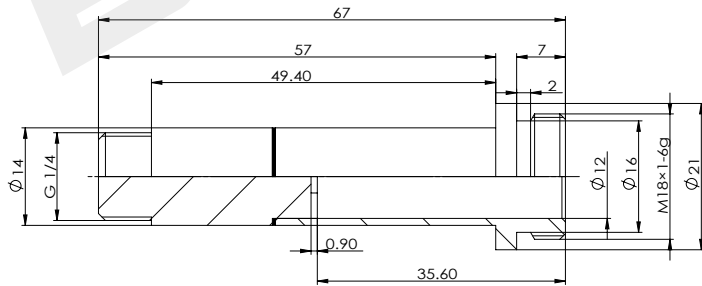


BYT07

Magnetic guide tube for cartridge valve

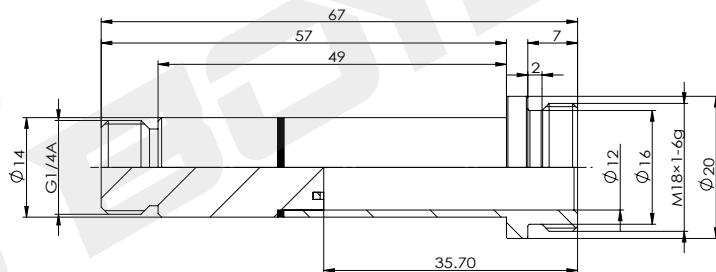
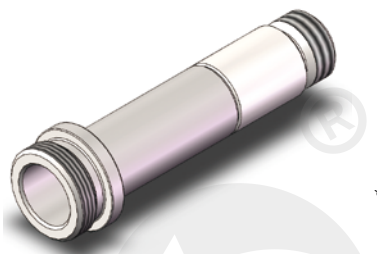
- Pull type, two-stage welding, thread connection

BYT07-14-01



technical parameter					
Working oil pressure	MPa	≤ 21	Hexagon size	mm	—

BYT07-14-02



technical parameter					
Working oil pressure	MPa	≤ 21	Hexagon size	mm	—