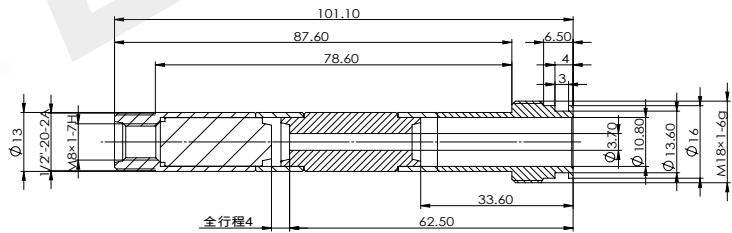
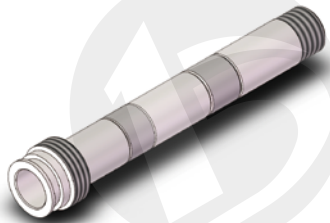


BYT10

Magnetic guide tube for cartridge valve

- Two way push-pull type, five section argon arc welding, threaded connection

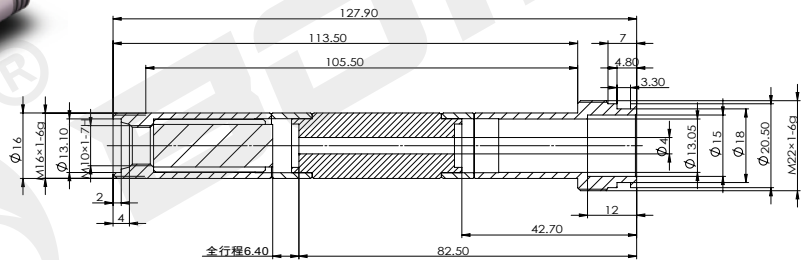
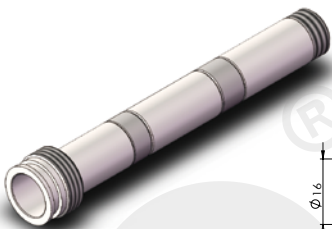
BYT10-S13-01M



technical parameter

Working oil pressure	MPa	≤ 21	Hexagon size	mm	—
----------------------	-----	------	--------------	----	---

BYT10-S16-01M



technical parameter

Working oil pressure	MPa	≤ 21	Hexagon size	mm	—
----------------------	-----	------	--------------	----	---