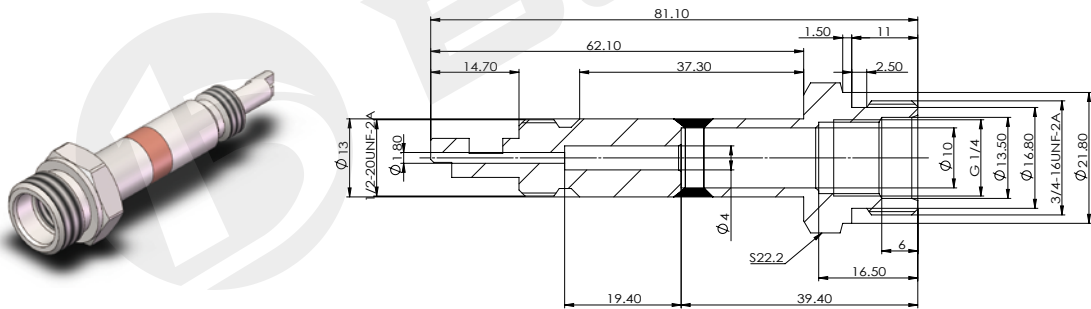


BYT13/14

Magnetic guide tube for cartridge valve

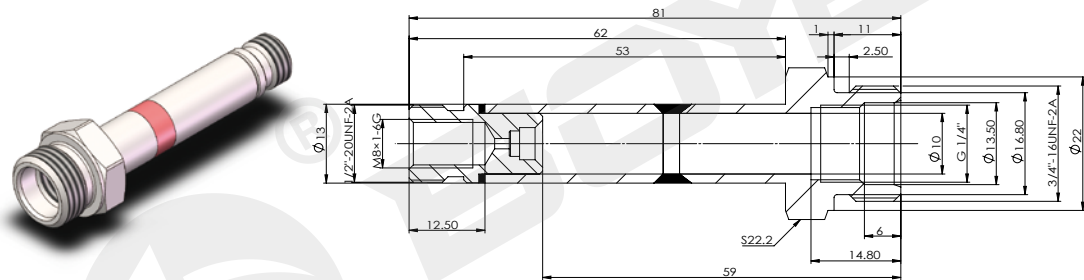
- Pull type, three section copper pile welding, external hexagonal thread connection

BYT13-13-01



technical parameter					
Working oil pressure	MPa	≤ 21	Hexagon size	mm	22.2

BYT14-13-01M



technical parameter					
Working oil pressure	MPa	≤ 21	Hexagon size	mm	22.2

The sample data comes from the laboratory environment and is only for reference. If your company needs the latest data or has special needs, please contact Boye hydraulic engineer.